

RESTORATIVE JUSTICE



Denver Justice Project knows that restorative justice practices have proven to be truly influential and are pivotal components required to reach a deep level of healing and accountability within ourselves and our communities.

TRADITIONAL APPROACH

V S

RESTORATIVE APPROACH

SCHOOL RULES ARE BROKEN

PEOPLE AND RELATIONSHIPS ARE HARMED

JUSTICE FOCUSES ON ESTABLISHING GUILT

JUSTICE IDENTIFIES NEEDS AND RESPONSIBILITY

ACCOUNTABILITY = PUNISHMENT

ACCOUNTABILITY = UNDERSTANDING IMPACT AND REPAIRING HARM

JUSTICE DIRECTED AT THE PERSON WHO HAS CAUSED HARM; THE PERSON HARMED IS IGNORED

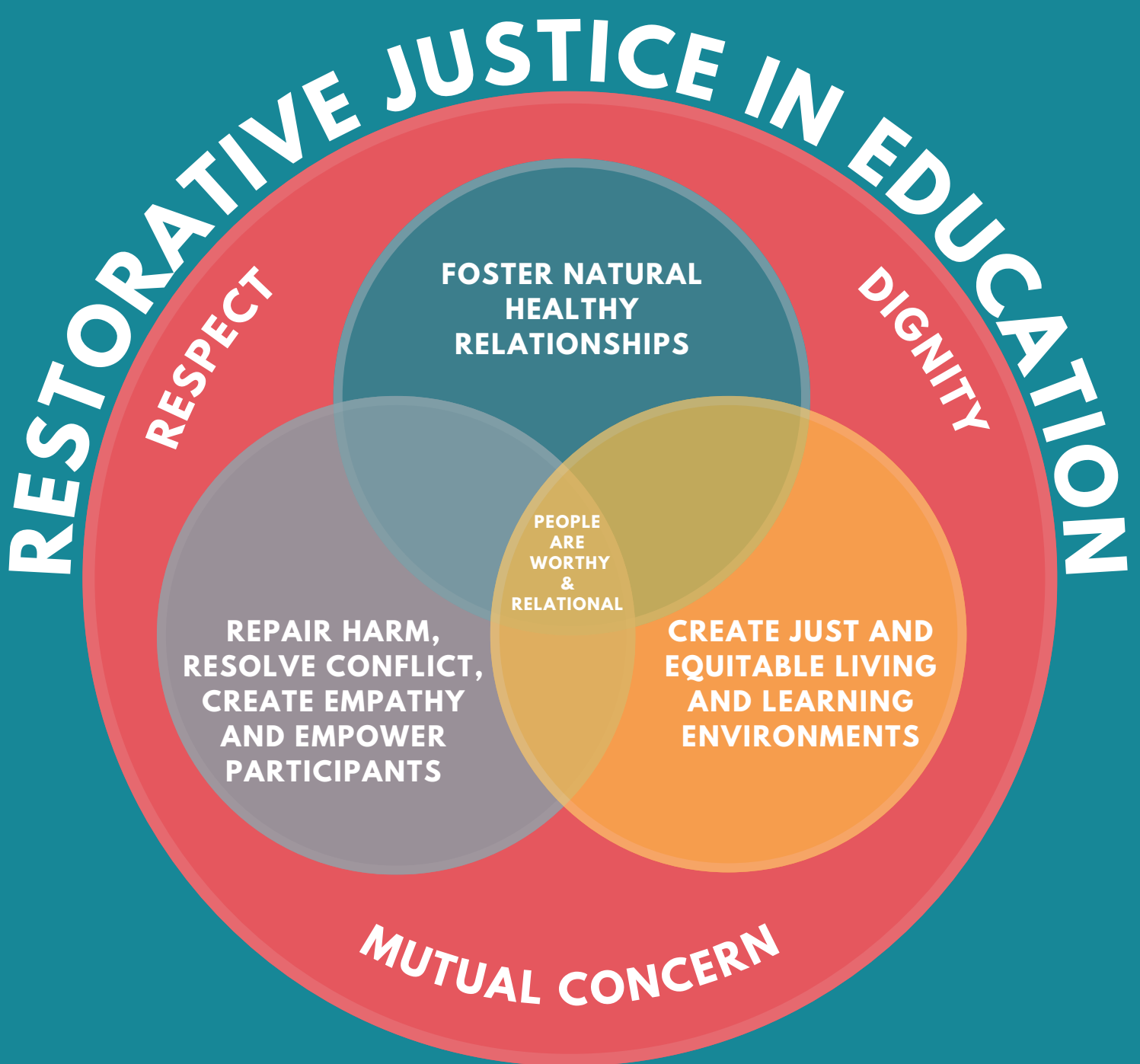
THE PERSON WHO HAS CAUSED HARM, VICTIM AND SCHOOL ALL HAVE DIRECT ROLES IN THE JUSTICE PROCESS

RULES AND INTENT OUTWEIGH WHETHER OUTCOME IS POSITIVE OR NEGATIVE

THE PERSON WHO HAS CAUSED HARM IS RESPONSIBLE FOR HARMFUL BEHAVIOR, REPAIRING HARM AND WORKING TOWARDS POSITIVE OUTCOMES

LIMITED OPPORTUNITY FOR EXPRESSING REMORSE OR MAKING AMENDS

OPPORTUNITY GIVEN TO MAKE AMENDS AND EXPRESS REMORSE



source: emu.edu/maed/rje-conference

**VISIT OUR WEBSITE FOR
MORE INFORMATION**



WWW.DENVERJUSTICEPROJECT.ORG